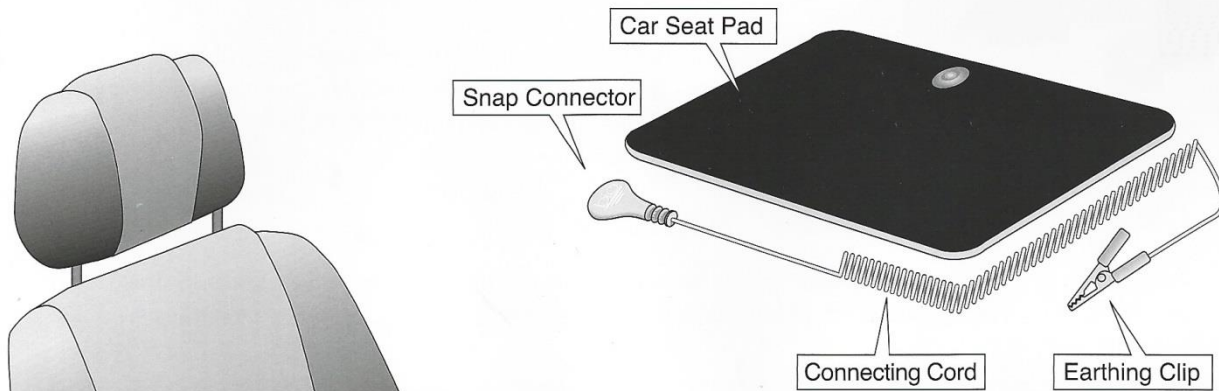


USER'S GUIDE



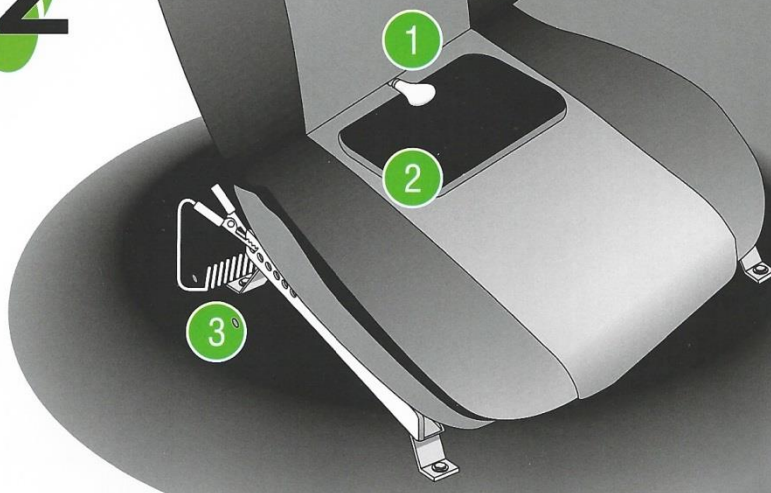
Unpack the box

Check your order. The items shown here are shipped with the Earthing Connection Car Seat Pad.



How to use the product

Seats vary depending on the model of your vehicle. This illustration shows a typical installation.



- 1 Thread the **Connecting Cord** through the opening between the back and bottom of the seat.
- 2 Place the **Car Seat Pad** on the car seat and attach the **Snap Connector** to the pad.
- 3 Route the **Connecting Cord** underneath the car seat to a point where the **Earthing Clip** can be attached directly to any metal portion of the seat frame below. Ensure that the surface is clean and free of grease or paint.

Benefits of this product

- 3**
- A. Scientific evidence now confirms, road vibration and related body motion on vehicle seats generate micro-electrical charges on the body.
 - B. The Earthing Connection Car Seat Pad neutralizes micro-electrical charges on the body. With these charges eliminated, you will feel better physically and be more alert when driving.

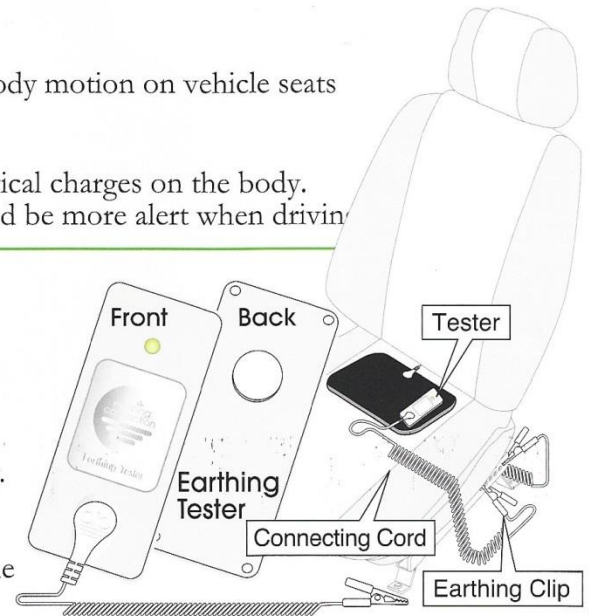
Test your connection

You may have purchased the optional **Earthing Tester**.

4

The Tester checks that the product and the cords are functioning properly. Place the Tester on your car seat pad as illustrated and connect the clip to a clean, unpainted surface of the seat frame.

A green light indicates that your product is in good working order. No green light indicates that your Earthing™ product may not be connected properly. Attach the tester clip to the product clip; a green light indicates the seat pad and cord are fine. Make sure the product clip is attached firmly to a non-painted clean surface. If you have a green light, disconnect the Tester and begin using your product.



Safety and product care

Before proceeding, please read these important safety instructions.

Safety Warning



5

Always use as directed. The Earthing Connection Car Seat Pad can be used on all motor vehicles. Use only Earthing™ approved connecting cord. For your safety, locate the connecting cord in such a way that it does not interfere with the operation of the vehicle.

Care and Maintenance

All Earthing Connection products can be washed as needed. Simply wipe down the mat using a non-corrosive cleaner. **NEVER** use bleach or any other oxidizing detergent which can destroy the conductive material.

This unique Earthing Connection system is protected by Patent No. US 6,683,779 B2.